

xPoint

xPoint Installation Guide

xPoint Installation Guide

The Installation Guide will provide with all the necessary information regarding the prerequisites, the available tools and the steps you need to take to setup an xPoint solution. After performing the steps suggested by this guide you will have a working xPoint solution with all the purchased components and. Depending on the fact that you purchased customizations or not the components will be in their default, standard form or with your specific customizations.



Get the prerequisites from ScriptServer. Use the valid set of credentials. Download and install the ScriptServer Management Tool from ScriptServer Marketplace and your new site is running

Contents

Table of Figures	4
Prerequisites	5
Prerequisites checklist	5
Server software:	5
Credentials:	5
IIS Web Server	6
MSSQL – Microsoft SQL Server	7
SQL Server Express Edition	7
.NET Framework	8
Microsoft Visual J# Version 2.0 Redistributable Package	8
Main Installation steps	9
Installing ScriptServer Management Tools	10
Installing new site with the ScriptServer Management Tools	13
Known issues	21

Table of figures

Figure 1: Enabling IIS Metabase and IIS 6 configuration compatibility	6
Figure 2: Step 1 starting the installation process	10
Figure 3: License agreement step	10
Figure 4: Step 3 - selecting installation folder and users that have access	11
Figure 5 Confirm installation	11
Figure 6: Final screen of the setup	12
Figure 7: Starting a new site installation	13
Figure 8: Login to ScriptServer services	13
Figure 9: Filling the site information	14
Figure 10: Filling the site configuration	14
Figure 11: Database information step	15
Figure 12: Database installation - connecting to the SQL server	15
Figure 13: Database properties	16
Figure 14: Validate information screen	16
Figure 15: Installation report	17
Figure 16: Post installation tasks	17
Figure 17: Update license page	18
Figure 18: License updated successfully	18
Figure 19: Initializing the application	19
Figure 20: Downloading the packages included in the license	19
Figure 21: First page, the default view	20

Prerequisites

This section will provide you with all the necessary information regarding the conditions that the system must meet in order to successfully setup an xPoint solution.

We will quickly go through all the necessary elements (see Prerequisites checklist) followed by more information regarding the necessary server software.

If you are already familiar with the necessary software and you have it already on your server then you will just need to check that you have enabled "IIS Metabase and IIS 6 configuration compatibility" in the case you are running IIS 7 or later (see IIS Web Server section)

Prerequisites checklist

Preparing the elements mentioned in this checklist will allow you to successfully install your xPoint solution and avoid any unnecessary problems.

Server software:

1. Web server with IIS 5.0 or newer
2. MSSQL database server 2000 or newer
3. .NET framework 3.5
4. Microsoft Visual J# Version 2.0 Redistributable Package

Credentials:

1. You will need a valid set of credentials for ScriptServer Services
2. You will need a set of credentials for the SQL server you will use that have the permission to create new databases and users

IIS Web Server

IIS - Internet Information Services (formerly Internet Information Server) is a web server created by Microsoft and it is included with the Microsoft Windows family of products. Depending on the OS edition IIS will be or not by default enabled.

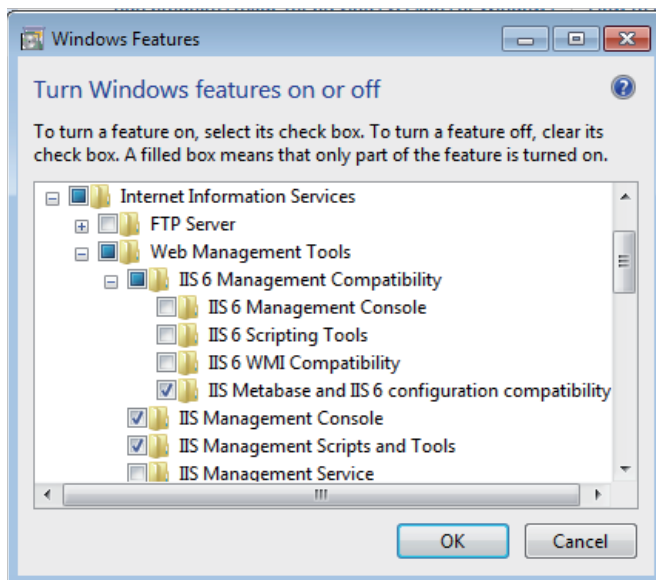
The versions of IIS and the corresponding Microsoft Windows operating systems are presented in the following table:

Table 1: IIS versions and the corresponding OSs

IIS Version	Operating System
IIS 5.0	Windows 2000
IIS 5.1	Windows XP Professional and Windows XP Media Center Edition
IIS 6.0	Windows Server 2003 and Windows XP Professional x64 Edition
IIS 7.0	Windows Server 2008 and Windows Vista
IIS 7.5	Windows Server 2008 R2 and Windows 7

Note: If you are using Windows Vista / Windows Server 2008 or later you will need to install "IIS Metabase and IIS 6 configuration compatibility" from "Add and Remove Windows Features" (Figure 1). To access this dialog window you need to go to "Control Panel" -> "Programs and Features".

Figure 1: Enabling IIS Metabase and IIS 6 configuration compatibility



MSSQL – Microsoft SQL Server

Microsoft SQL Server is relational model database server developed by Microsoft. The website for MSSQL is available at <http://www.microsoft.com/sqlserver>

There are various available versions. Most recent and relevant to xPoint are presented in the following table.

Table 2: Microsoft SQL Server versions

Version	Year	Release name	Codename
8.0	2000	SQL Server 2000	Shiloh
8.0	2003	SQL Server 2000 64-bit Edition	Liberty
9.0	2005	SQL Server 2005	Yukon
10.0	2008	SQL Server 2008	Katmai
10.25	2010	SQL Azure	Matrix (aka CloudDB)
10.5	2010	SQL Server 2008 R2	Kilimanjaro (aka KJ)

Microsoft make the SQL Server available in several editions that have various features according to their intended use. Among these editions there is the SQL Server Express Edition.

SQL Server Express Edition

The SQL Server Express Edition is a free edition of SQL server that has some limitations. These limitations are:

- uses only one processor (CPU) (the count refers to the CPU units and not the cores, runs on systems with more than one CPU)
- uses at most 1GB of RAM (runs on any size RAM system)
- data base files cannot exceed 4GB (10 GB from SQL Server 2008 R2)

The numbers of the users or of the databases are not limited in any way.

.NET Framework

The .NET Framework is a software framework for Microsoft Windows operating systems. This framework allows development of powerful software applications that are able to exploit the latest technology. From the end-user point of view the .NET applications are more stable due to the way the code runs. The framework is included in the modern Microsoft Windows operating systems.

The .NET Framework is included in the operating system as of Windows 7 and Windows Server 2008 R2 operating systems.

The .NET framework can be installed on your system using the Windows Update services of the operating system. Also you can download the necessary setup files from the Microsoft site at the following address: <http://www.microsoft.com/net/download.aspx>

Microsoft Visual J# Version 2.0 Redistributable Package

The Microsoft Visual J#™ Redistributable Package version 2.0 includes everything you need to run your Visual J# applications on a computer that already has the Microsoft .NET Framework v2.0 installed.

You can download the Microsoft Visual J#™ Redistributable Package version 2.0 from:
<http://www.microsoft.com/downloads/en/details.aspx?familyid=f72c74b3-ed0e-4af8-ae63-2f0e42501be1&displaylang=en>

Main Installation steps

1. Download ScriptServer Management Tools from ScriptServer Marketplace
<http://www.scriptserver.com/ScriptServerServices/Marketplace>
2. Install ScriptServer Management Tools (see Installing ScriptServer Management Tools section)
3. Install your new site using the ScriptServer Management Tools
4. Installing new site with the ScriptServer Management Tools section

To install additional site on the same machine you will just need to repeat the third step for each additional site you need to install. Depending on your license you will need or will not need additional credentials for the ScriptServer services.

Installing ScriptServer Management Tools

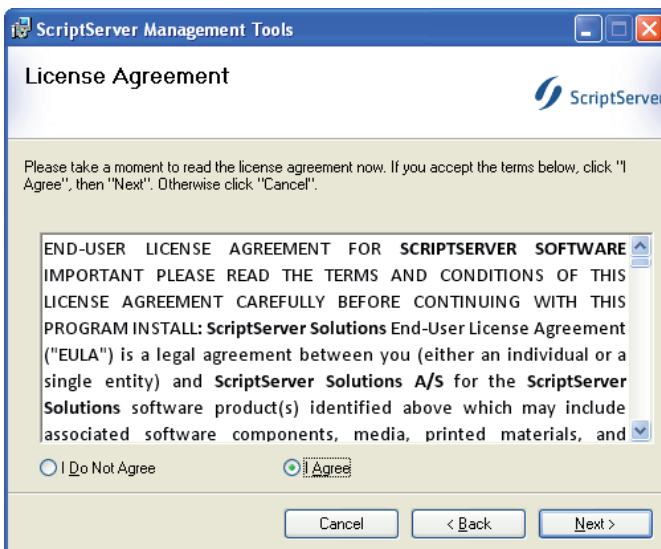
Run the "ScriptServer.Management.Tools.msi" executable to start the ScriptServer Management Tools setup.

Figure 2: Step 1 starting the installation process



Click *Next* in the screen depicted in Figure 2 to advance to the next step in the setup.

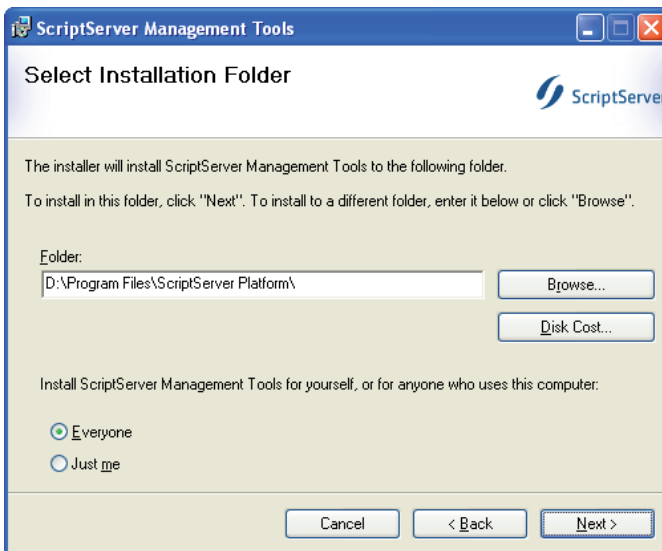
Figure 3: License agreement step



To be able to further proceed you need to agree with the terms of the end-user license agreement.

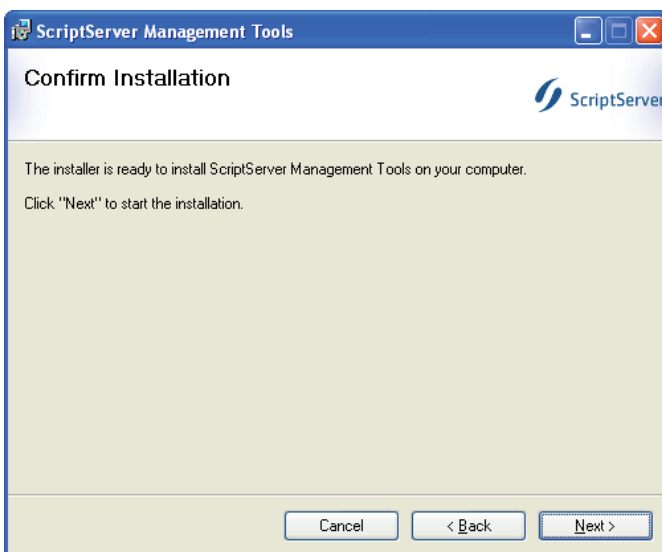
In the step 3 you can select where the ScriptServer Management Tools files will be installed. Moreover you can select if the tools will be available for all the users or only for the current user.

Figure 4: Step 3 - selecting installation folder and users that have access



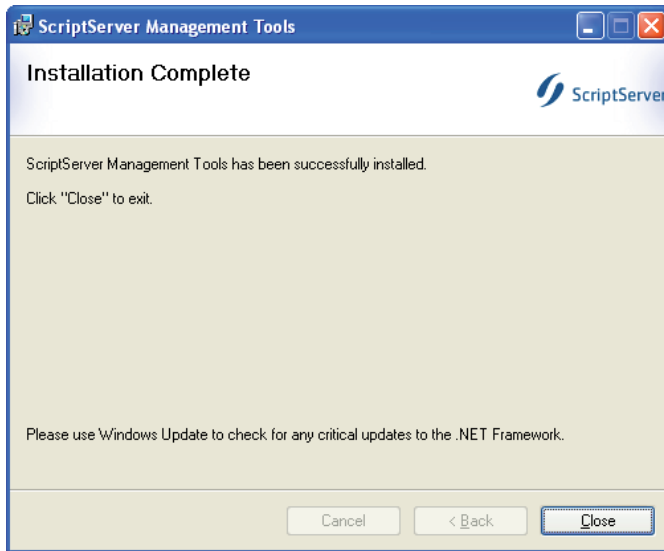
In the following step you are required to confirm the installation Figure 5. Until this point no changes have been done to your files. Setup just gathered the information necessary to perform the installation. After clicking next the setup will copy the files to your selected folder and install the necessary files.

Figure 5 Confirm installation



In the screen depicted in Figure 6 click close to finish the installation process and exit the setup wizard.

Figure 6: Final screen of the setup

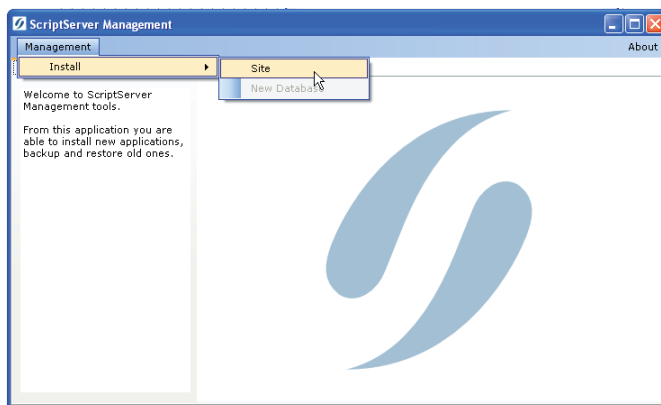


Now you can start the ScriptServer Management Tools using the shortcut created on the desktop or the one in the start menu.

Installing new site with the ScriptServer Management Tools

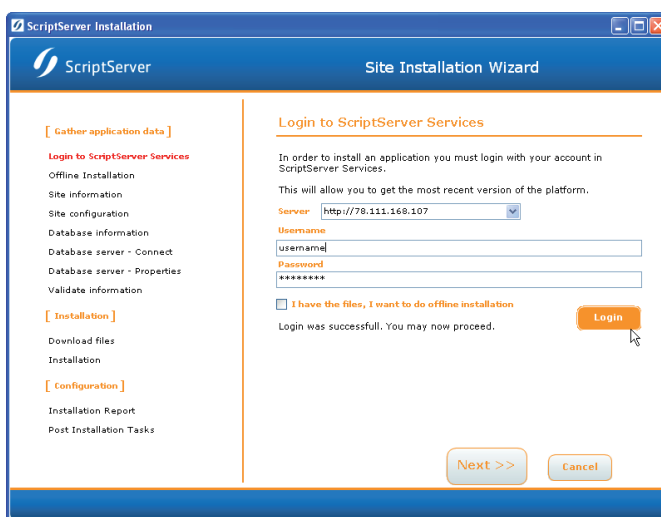
In the ScriptServer Management Tools selecting “Management” -> “Install” – “Site” will commence a new site installation process.

Figure 7: Starting a new site installation



In the new window that appears you will need to fill in your ScriptServer Services credentials and log in (see Figure 8). If you do not have any credentials contact ScriptServer at www.scriptserver.com

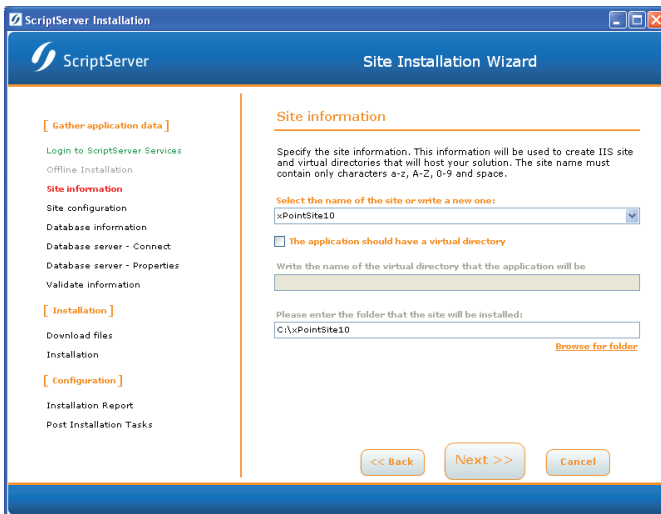
Figure 8: Login to ScriptServer Services



Select the server (<http://78.111.168.107>), fill the username and password text boxes and click “Login”. After the successful log in the “Next” button will appear in the bottom right corner of the window allowing you to advance at the next step in the install process.

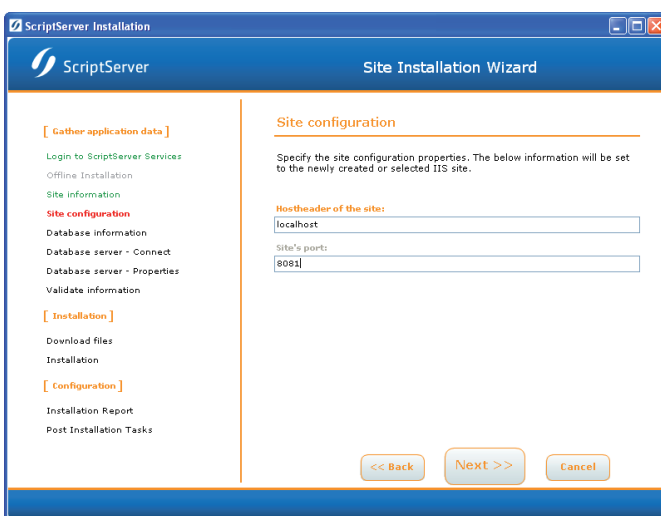
In the “Site information” you need to fill in the name of the site and the folder where the new site files will be stored (see Figure 9).

Figure 9: Filling the site information



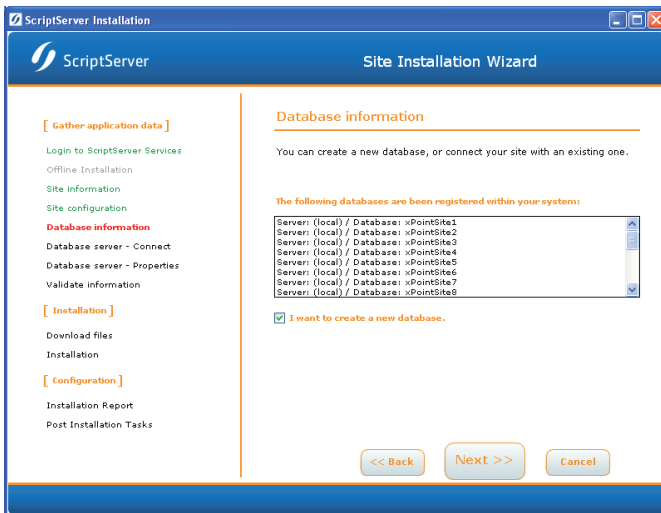
In the next step (Figure 10) you are required to enter the site configuration details regarding the host header and the port that will be associated to the newly created site. Depending on your current IIS setup and configuration you might choose a host header value such as “localhost” or www.yourdomain.com and a port. If you are not sure about the port try letting the default value of 80 that is the well known port for HTTP.

Figure 10: Filling the site configuration



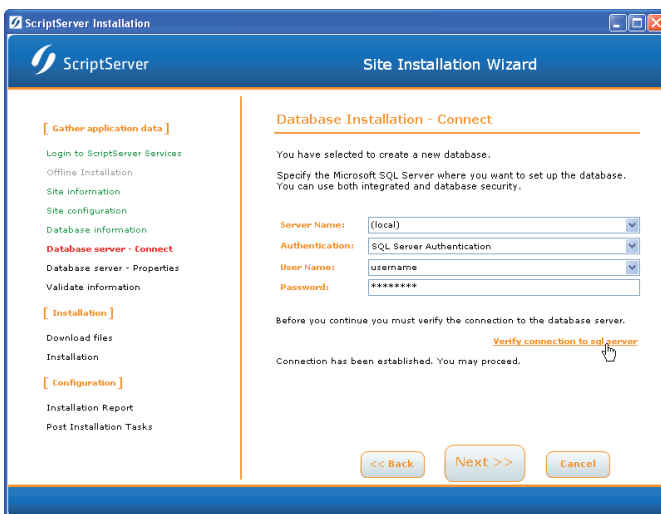
In the next step (Figure 11) you can choose the database information. The existing databases that are found on the server will be presented in case you want to connect the newly installed site with an existing database. Otherwise just tick the checkbox "I want to create a new database" to create a new database for the site.

Figure 11: Database information step



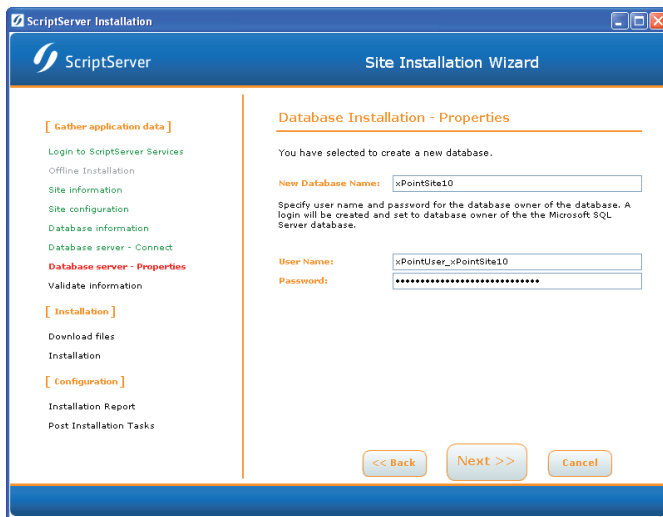
In the following step (Figure 12) you have to enter the details necessary to allow the setup to connect and create the new database and the associated user. Enter the SQL server, the authentication type used and the credentials if necessary (when selecting Windows Authentication the setup will use the current logged user). Click *Verify connection to the SQL server* to make sure that the details are in order. If the connection can be successfully established you can proceed to the next step.

Figure 12: Database installation - connecting to the SQL server



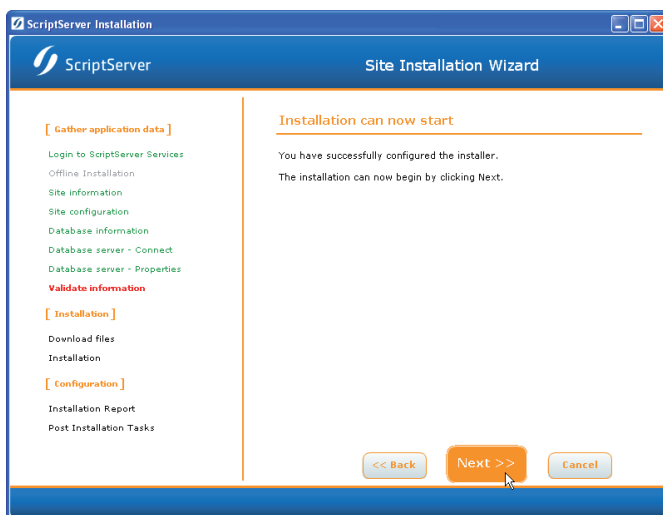
In the step depicted in Figure 13 you can choose the database name for the new site and the user that will be associated to this database. This information will be used by the new site to access the database.

Figure 13: Database properties



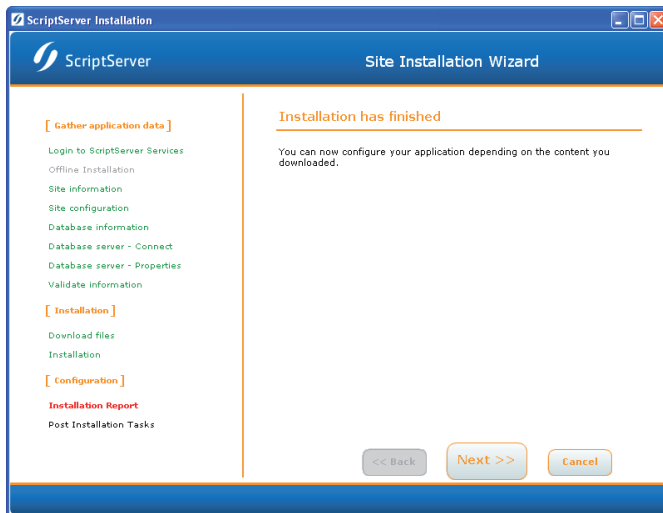
The information gathered so far the information necessary for the installation (Figure 14). Clicking *Next* will initiate the installation tasks

Figure 14: Validate information screen



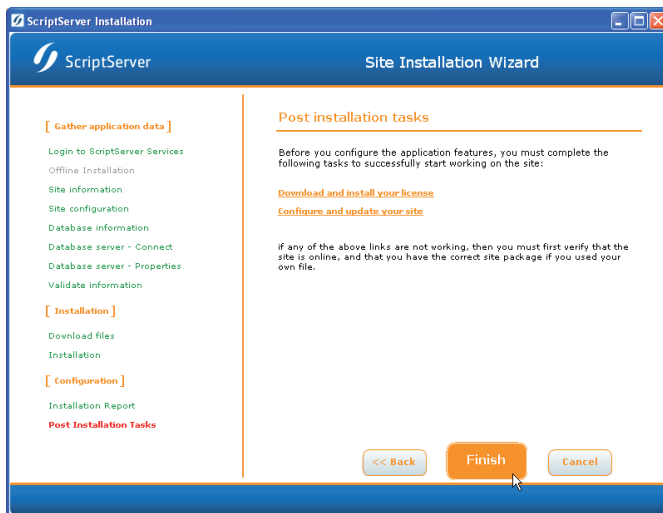
After the installation (Figure 15) any errors encountered during the setup will be reported.

Figure 15: Installation report



After the installation finishes the setup wizard will advance to the "Post installation tasks" step (Figure 16).

Figure 16: Post installation tasks



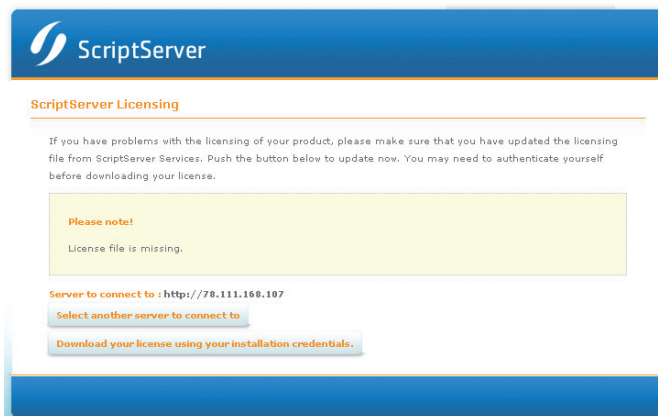
First you should download and install your license. Click the *Download and install your license* option in the post installation tasks screen.

You can click *Browse the newly installed application* option to launch the just installed and configured site into your default browser.

A browser window will be opened that will allow you to log in to ScriptServer Services and to download the license (Figure 17).

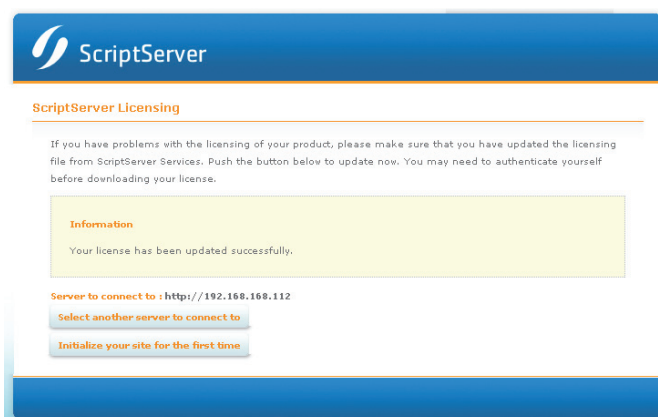
Click the *Download your license using your installation credentials* button to download your license.

Figure 17: Update license page



After downloading the license you will be notified that the license has been updated successfully and you will have the option to advance to the next important post installation task by clicking the *Initialize your site for the first time* button. (Figure 18)

Figure 18: License updated successfully



The second post installation task concerns the initialization of few settings for the new site (Figure 19). First element that you need to fill in is the desired administrator password. Then you need to select the server and the credentials that will be used by the application to reach the components included in your license (normally these will be automatically filled after a fresh install). The final element is to pick an update policy. After all data is filled in click *Save preferences and continue* to conclude this step and start the update process that will download and install the various components that have been included in your license. (Figure 20) Finally, after the updates and the downloads are completed, you can go on using your site.

Figure 19: Initializing the application

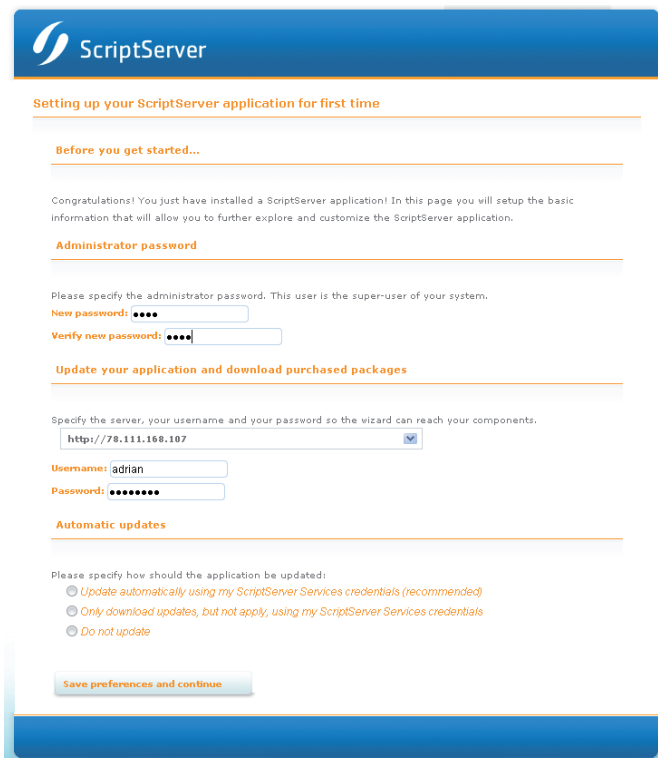
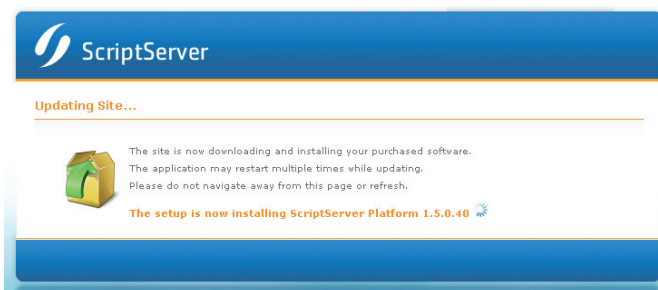
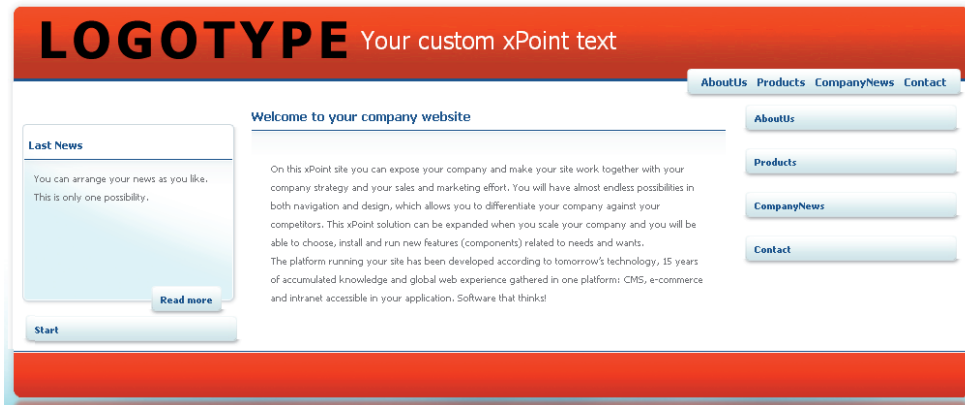


Figure 20: Downloading the packages included in the license



You can browse the newly installed site. Depending on what components are included in your license you might have a different view (Figure 21).

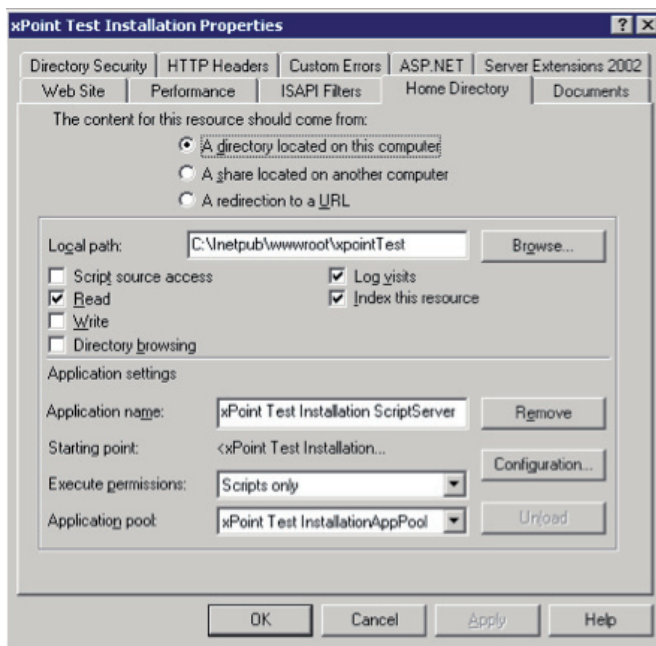
Figure 21: First page, the default view



To further customize and setup the site you can go to the administration interface accessible at <http://<yourserver>/admin>. In this example this would be <http://localhost:8081/admin>. When asked to login use the following credentials: username "administrator" and for password the password you have set at the application initialization (Figure 19).

Known issues

1. After initializing the application and clicking save you still get always redirected to the initialization page. Open the table [ScSeUpApEn] and set [HasBeenInitializedForFirstTime] flag to true.
2. Going to the root of your application with the browser will result in a forbidden access error.



Using IIS Manager set the "Read" access and give execute permission for "Scripts only"

3. You get an SQL related exception when loading the first page:

<http://<yourserver>/Default.aspx>

to troubleshoot this problem you might try to manually run the solution update first log in to the application using the <http://<yourserver>/Services/Login.aspx> next point your browser to the

<http://<yourserver>/Services/PackageWizard/PackageWizard.aspx?url=http%3A%2F%2F78.111.168.107>



xPoint

ScriptServer – 15 years in business – dedicated to meet our customers challenges of tomorrow

ScriptServer has 15 years of expertise in developing, selling and supporting web based software in standard packages.

New platform: xPoint.NET – e-commerce, CMS and intranet all in one

Since 2009 ScriptServer has developed a new platform: xPoint. The platform contains all products in one platform and is based on today most advanced it-technology. Packages and components can be purchased in the web based ScriptServer Marketplace.

The ScriptServer organization

Our office in Denmark is the HQ for the ScriptServer activities. We have the responsibility for development, sales, support, production and administration.



ScriptServer Solutions A/S

Herstedvang 7C
2620 Albertslund
Denmark
Phone +45 33 26 31 00
support@scriptserver.com
www.scriptserver.com



ISV/Software Solutions
Custom Development Solutions